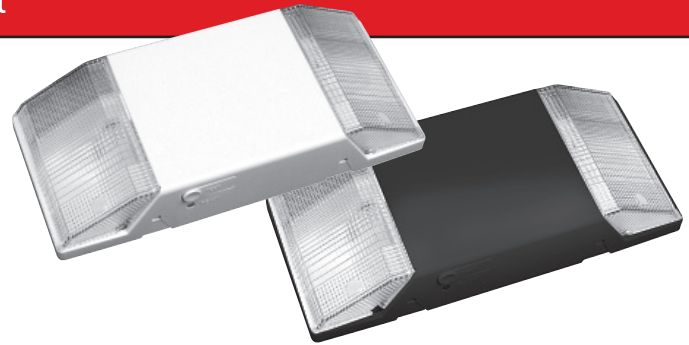


SEEM2: Fixed Optics, Low-Profile Emergency Light

Emergensee
Lighting Products, Inc.

America's Leader in Life-Safety Lighting Products™



Features

- Compact, low-profile design in neutral finish
- Universal mounting plate with EZ Quick Connect for fast installation
- ETL listed for damp locations & meets UL924, NFPA 101 Life Safety Code, NEC, OSHA, Local and State Codes

Electrical

- Dual 120V/277V voltage
- Charge rate/power "ON" LED indicator light and push-to-test switch for mandated code compliance testing
- LVD (low voltage disconnect) prevents battery from deep discharge
- 6V, 4.5Ah, sealed lead acid, maintenance-free, rechargeable battery
- Internal solid-state transfer switch automatically connects the internal battery to lamp heads for minimum 90-minute emergency illumination
- Fully automatic solid-state, two-rate charger initiates battery charging to recharge a discharged battery in 24 hours

Mounting

- Surface mount via easy connect back plate, which fits most standard junction boxes and snaps into place making internal electrical connections.

Housing

- Injection-molded, engineering-grade, V-0 flame retardant, high-impact, thermoplastic in white or black finish

Illumination

- Two fixed optics 5.4 watt, glare-free lighting heads
- High-performance smooth thermoplastic reflector and plastic lens for optimal light distribution

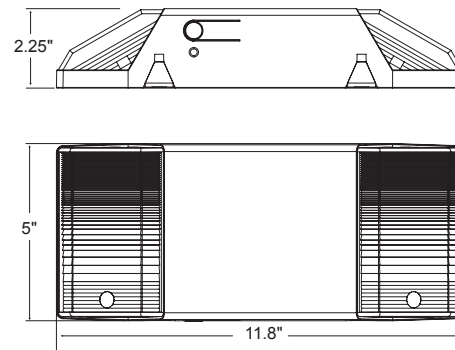
Options

- SDT: Self-Diagnostic (option SDT) continually diagnoses unit's performance and tests system (auto battery discharge once every 30 days and once every 12 months) to ensure reliable operation and to meet electrical and life safety codes
- CP: 3 foot 3-wire cord and plug available

Warranty

- Five Year Warranty on all electronics and housing. Batteries are pro-rated warranted for 5 years.

Dimensions



ORDERING INFORMATION

Model	Color	Options
SEEM2	Blank - White B - Black	KR5 - 5.4W Krypton Lamps CP - Cord & Plug USA - ASSEMBLED IN THE U.S.A.
Model	Color	Options
-	-	-

