

Job Name: \_\_\_\_\_

Type: \_\_\_\_\_

Part #: \_\_\_\_\_

Notes: \_\_\_\_\_

## PFL Series LUNAR



RoHS  
compliant

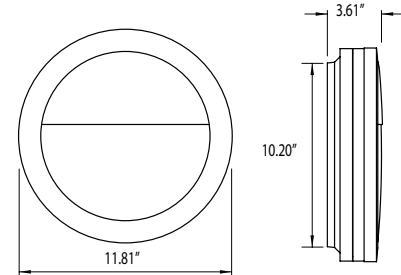


### FEATURES:

- Available in LED
- Powder Coated Cast Aluminum  
Wall or Ceiling Mount
- Enclosed & Gasketed  
ETL Listed for Wet Locations (IP65)
- Standard Pack QTY: 6



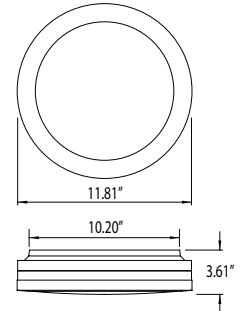
H/CTR: 5.9"



**PFL372**

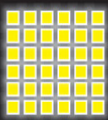


H/CTR: 5.9"



**PFL371**

MODEL	LIGHT SOURCE	BODY	DIFFUSER	OPTIONS	
PFL371 PFL372	EOS LED 120V AC, 50/60 Hz, HPF, 50,000 HRS L70*, AMBIENT OP TEMP -40°C TO +40°C, 5 YEAR WARRANTY, DIMMABLE, ENERGY STAR***	W-White B- Black	POLYCARBONATE W-White	M-Motion Sensor EB-Emergency Backup	
	LE1200 - 14W, 80 CRI >102 Lumens Per Watt**				W-1430lm 3000K C-1500lm 4000K
	LE1800 - 22W, 80 CRI >88 Lumens Per Watt**				W-1950lm 3000K C-2130lm 4000K
PFL371	LE2600 - 32W, 80 CRI >84 Lumens Per Watt**	W-White B- Black	POLYCARBONATE W-White	(options not available with LE2600)	
	MULTI-VOLT LED 120-277V, 50/60 Hz, CONSTANT CURRENT AT 700mA, DRIVER UL CLASS 2, HPF, THERMALLY PROTECTED ARRAY, 50,000 HRS L70* AMBIENT OP TEMP -40°C TO +40°C, 3 YEAR WARRANTY, ENERGY STAR***			W-2700lm 3000K C-2750lm 4000K	M-Motion Sensor
	L1800 - 22W Power Input CRI 74 (TYP) >82 Lumens Per Watt**				



## PFL SERIES

### EMERGENCY BACKUP LED LIGHT



#### FEATURES:

- 135 Min. of Emergency Backup LED Test Switch/LED Charge Indicator 4W LED Backup Array
- NiCd, 3.6 VDC Battery
- 24hr Recharge Time
- Ambient Temp: 0°C to +40°C
- 5yr Warranty



#### FIXTURES WITH EMERGENCY BACKUP LED LIGHT OPTION



IP65 Rated & ADA Compliant  
Enclosed & Gasketed  
Wall or Ceiling Mount  
ETL Listed for Wet Locations



Vandal Resistant Knockouts for  
Conduit Wall or Ceiling Mount  
UL Listed for Wet Locations

#### ORDERING INFORMATION:

MODEL	LIGHT SOURCE	BODY	DIFFUSER	OPTIONS
<b>PFL371</b> <b>PFL372</b> <b>PFK391</b> <b>PFK395</b>	<p>EOS LED 120V AC, 50/60 Hz, HPF, 50,000 HRS L70*, AMBIENT OP TEMP -40°C TO +40°C, 5 YEAR WARRANTY, DIMMABLE</p> <p><b>LE800</b> - 13W Power Input CRI 80 (TYP) &gt;88 Lumens Per Watt**</p> <p><b>LE1200</b> - 14W Power Input CRI 80 (TYP) &gt;102 Lumens Per Watt**</p> <p><b>LE1800</b> - 23W Power Input CRI 80 (TYP) &gt;88 Lumens Per Watt**</p> <p>MULTI-VOLT LED 120-277V, 50/60 Hz, CONSTANT CURRENT AT 700mA, DRIVER UL CLASS 2, HPF, THERMALLY PROTECTED, 50,000 HRS L70*, AMBIENT OP TEMP -40°C TO +40°C, 3 YEAR WARRANTY</p> <p><b>L1800</b> - 22W Power Input CRI 74 (TYP) &gt;82 Lumens Per Watt**</p>	<p><b>W</b>-White <b>B</b>-Black</p>	<p>POLYCARBONATE F-Frosted Prismatic W-White*</p>	<p><b>M</b>-Motion Sensor <b>EB</b>-Emergency Backup</p>
		<p><b>W</b>-White <b>B</b>-Black</p>	<p>POLYCARBONATE F-Frosted Prismatic W-White*</p>	<p><b>M</b>-Motion Sensor <b>EB</b>-Emergency Backup</p>