

PLEDHBRE 100/150W-5K-CT

Premium Round LED High Bay, 12,500 – 20,358 Lumens (100W - 150W)

STANDARD



100W/150W

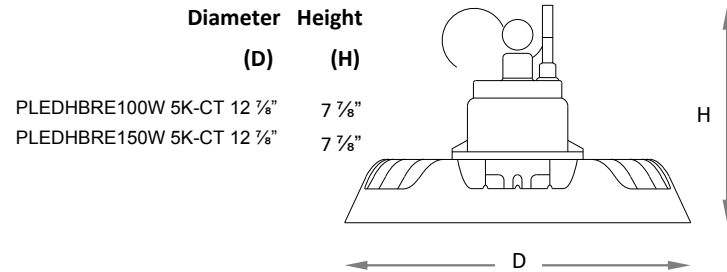
FEATURES

- Available in 5000k.*
 - Long-life LEDs provide at least 150,000 hours of operation with 70% or more of initial lumen output (L₇₀).**
 - Provides a range of 12,519 to 20,358 lumens.*
 - Universal 120-277 AC voltage (50-60Hz) and 6-foot incoming AC power cords are standard.
 - 0-10vdc dimming drivers are standard.
 - Watertight, compression-type electrical connectors.
 - Power factor > 0.90.
 - Total harmonic distortion < 20%.
 - Color rendering index > 80.
 - Die cast aluminum housing, painted black.
 - Easy installation in new construction or retrofit.
- * Contact factory for other color temperatures and lumen packages.
** L₇₀ hours are IES TM-21-11 calculated hours.

WARRANTY & LISTINGS

- cULus listed for wet locations in ambient temperatures from -40°C to 40°C (-40°F to 104°F).
- DLC premium approved.
- IP65 rated for ingress protection.
- Complies with FCC Part 15.
- Complies with EN61000-4-5, surge immunity protection (4kV).
- 5-year warranty of all electronics and housing.

DIMENSIONS



MOUNTING OPTIONS

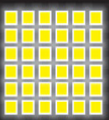
- Suspension from standard mounting ring.

ELECTRICAL DATA

Model	Color Temp.	CRI ¹	Luminaire Lumens	Luminaire Watts	Lumens/Watt	Input Voltage ²	Input Current (A)			Power Factor	THD ³	L ₇₀ Hours ⁴
							120V	240V	277V			
PLEDHBRE100W-5K-CT	5000k	>80	12,519	93	135	120-277	0.78	0.39	0.34	>90%	<20%	150,000
PLEDHBRE150W-5K-CT	5000k	>80	20,358	145	141	120-277	1.21	0.60	0.52	>90%	<20%	150,000

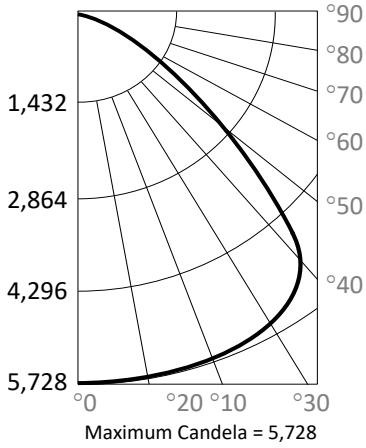
ORDERING INFORMATION:

Model	Luminaire Watts	Luminaire Lumens	Lumens Per Watt	Color Temperature	Housing Color	Input Voltage
				5K-CT = 5000k	Black	120-277V
PLEDHBRE100W 5K-CT	93	12,519	135	5K-CT = 5000k	Black	120-277V
PLEDHBRE150W 5K-CT	145	20,358	141	5K-CT = 5000k	Black	120-277V



PHOTOMETRIC DATA

PLEDHBRE100W-5K-CT (12,519 Lumens)

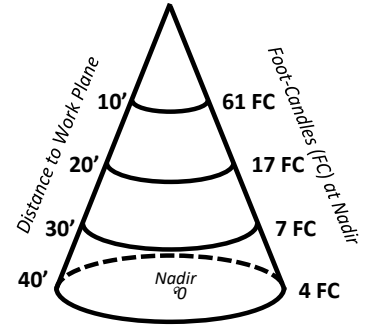


	0°	90°
0°	5,691	5,691
10°	5,658	5,725
20°	5,637	5,660
30°	5,489	5,380
40°	4,926	4,236
50°	2,158	1,822
60°	880	792
70°	336	271
80°	92	42
90°	0	0

Zonal Lumen Summary

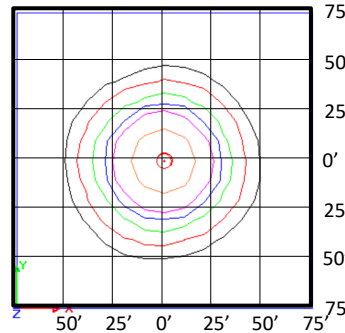
Zone	Lumens	% Fixture
0° - 10°	543	4.3%
0° - 20°	2,151	17.2%
0° - 30°	4,730	37.8%
0° - 40°	7,967	63.6%
0° - 50°	10,505	83.9%
0° - 60°	11,713	93.6%
0° - 70°	12,259	97.9%
0° - 80°	12,448	99.4%
0° - 90°	12,471	99.6%
90° - 180°	48	0.4%
0° - 180°	12,519	100.0%

Cone of Light

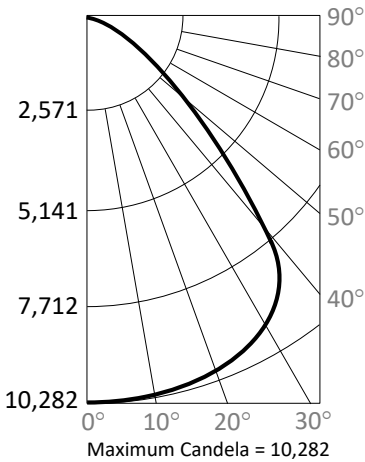


Notes:

- Isofootcandle plots depict initial footcandles at grade.
- Gridlines represent units of mounting height of 25 feet.



PLEDHBRE150W-5K-CT (20,358 Lumens)

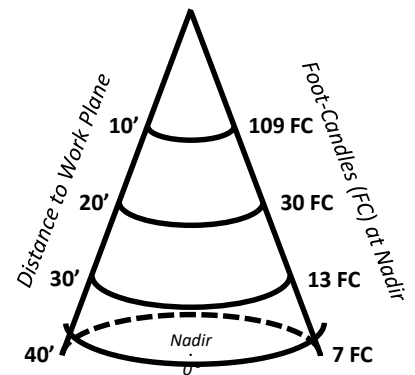


	0°	90°
0°	10,277	10,277
10°	10,187	10,118
20°	9,920	9,773
30°	9,390	9,096
40°	7,873	6,517
50°	3,268	2,559
60°	1,378	1,065
70°	535	414
80°	178	109
90°	12	0

Zonal Lumen Summary

Zone	Lumens	% Fixture
10° - 0°	976	4.8%
20° - 0°	3,815	18.7%
30° - 0°	8,252	40.5%
40° - 0°	13,579	66.7%
50° - 0°	17,271	84.8%
60° - 0°	19,097	93.8%
70° - 0°	19,928	97.9%
80° - 0°	20,249	99.5%
90° - 0°	20,288	99.7%
180° - 90°	70	0.3%
180° - 0°	20,358	100.0%

Cone of Light



Notes:

- Isofootcandle plots depict initial footcandles at grade.
- Gridlines represent units of mounting height of 25 feet.

