

P555 LED Series

Covered Wall Unit

STANDARD



This covered wall unit is designed to provide maximum lumen output in areas such as hallways, bathrooms, kitchens, stairways, and hospitals. An assortment of options in either single or double lamp allows this utility wall and surface mounted unit to satisfy a variety of lighting needs.

CONSTRUCTION

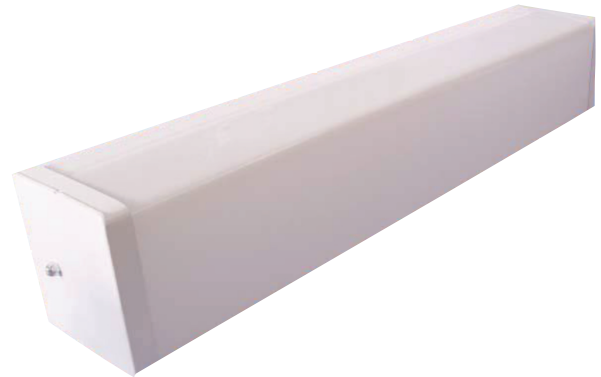
Housing is designed from heavy gauge die formed steel and finished in either baked white enamel or polyester powder coating. Socket plate is riveted to housing adding to the structural support of the fixture. Lens is extruded white acrylic. End plates are attached by acorn nuts and secure the lens to the fixture.

ELECTRICAL

All units are furnished with UL Listed Class P thermally protected ballast. Other voltages are available upon request. Fixtures meet requirements for UL Luminaire Standard # 1598. All units comply with National Energy Standard. All units are UL certified damp location M 59006648

MOUNTING

Unit is equipped with holes and 7/8" knockouts in housing for surface mounting. Fixture may be mounted individually or with optional joiner bands may be used in a continuous run.

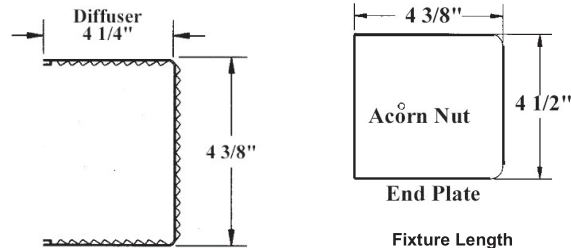


SURFACE MOUNT LED FIXTURES

WARRANTY LISTINGS

- 5-year warranty of all electronics and housing.
- UL Certified for damp location

DIMENSIONS



| Fixture Length | | | |
|----------------|----------|-------|--------|
| T12 | T12HO | T8 | Length |
| F15T12 | --- | --- | 18" |
| F20T12 | --- | F17T8 | 24" |
| F30T12 | --- | F25T8 | 36" |
| F40T12 | F48T12HO | F32T8 | 48" |

ORDERING GUIDE

Max weight = 12lbs / 48"

P555 - LED

Series

P555-LED

Size

18 = 18"
 2 = 2FT
 3 = 3FT
 4 = 4FT

Lumens

2FT
 3166 (17W)
 4350 (24W)
 5470 (31W)
 6452 (39W)

Color

3K
 35K
 4K
 5K

Options

EMB= emergency ballast
 REFS = Silver Reflector
 OCC-E = External Occupancy
 Sensor OCC-I= Internal Occupancy
 sensor BI-LEV= Bi-level dimming
 system O = grounded outlet
 TOG = Toggle Switch
 PULL= Pull chain switch
 NL= Night Light
 3WAY= 3 way system
 PRIS = Prismatic lens
 DL= Down light only
 POLY= Polycarb lens
 FR= Frosted lens over LED boards

*0-10v low voltage dimming standard per fixture

*Higher and custom lumen packages available upon request

*Call Factory for lumen options of 18" and 3FT models

4FT
 3220 (17W)
 4480 (24W)
 5705 (30W)
 6910 (37W)
 8640 (48W)
 11797 (70W)

Specifications Subject To Change Without Notice