

FP Series

NSF • IP66 • COLD STORAGE • LINEAR HIGH-BAY

The FP Series FP2, FP4, and FP8 pendant and ceiling mount linear LED luminaire provides controlled illumination for general and task lighting designed for the harsh environments found in food processing and heavy manufacturing facilities. The FP Series luminaire utilizes high efficiency LED light sources to reduce maintenance and lower energy costs. These high-quality durable fixtures are used in food and beverage processing, meat and poultry processing, livestock agricultural facilities, heavy industrial, and manufacturing facilities. Typical lighting applications include meat and poultry processing, food and beverage processing, cold storage, harsh environment industrial, vehicle wash facilities, pharmaceutical and scientific labs. Mounting heights of 8 to 25 feet can be used based on light level and uniformity requirements.

Specifications and Features:

Housing:

Heavy-Duty Extruded and Die Cast Aluminum Housing construction with silicone gaskets and stainless-steel fasteners. Drivers, sensors, and battery backup are mounted on modular internal trays for easy maintenance.

Listing & Ratings:

ETL: Listed for Wet Locations, ANSI/UL 1598, 8750. ETL Sanitation certified to National Sanitation Foundation ANSI NSF2, Food Splash Zone. IP66 Sealed LED Compartment, Pressure wash rated to 1400 PSI.

Finish:

Powdercoat Finish Over a Chromate Conversion Coating.

Lens:

Clear UV-Stabilized Polycarbonate or Optional DR Acrylic Lens. Medium Distribution (70° Beam) or Wide Distribution (110° Beam) available.

Mounting Options:

Pendant Mount or Use Optional Stainless Steel Adjustable wall/Ceiling Bracket (Field Installed) available.

EasyLED LED:

Aluminum Boards

Wattage:

FP2 – 2FT – 25w, 35w, or 50w Array
 FP4 – 4FT – 50w, 75w, or 100w Array
 FP8 – 8FT – 150w or 200w Array

Driver:

Electronic Driver, 120-277V, 50/60Hz or 347-480V, 50/60Hz; Less Than 20% THD and PF>0.90. Standard Internal Surge Protection 2KV to 6kV depending on wattage. 0-10V Dimming Standard for a Dimming Range of 100% to 10%; Dimming Source Current is 150 Microamps.

Controls:

Fixtures Ordered with Factory-Installed Motion Sensor Controls are Internally Wired for Switching and/or 1-10V Dimming Within the Housing. Remote Direct Wired Interface of 1-10V Dimming is Not Implied and May Not Be Available, Please Consult Factory. Fixtures are Tested with Controls and May Not Function Properly with Controls Supplied By Others. Fixtures are NOT Designed for Use with Line Voltage Dimmers.

Warranty:

5-Year Warranty for -40°C to +55°C Environment.

**FP Series FP 4FT
 Shown
 2FT and 8 FT Available**



**Shown with Optional
 Internal Microwave Sensor**



We have custom and standard manufacturing options. Use this form to build your part number or reach out to our sales team for assistance.

GET YOUR PRODUCTS FASTER WITH OUR QUICK SHIP PROGRAM

Multiple USA locations = 98-3-1 Quick Ship Program
 98% Fill Rate – 3 Day Lead Time – 1 Piece Minimum Order



Order Information Example:		FP2QM1X50U5KCPW					
FP2Q			U			W	
Model	Optics	Wattage	Driver	CCT	Lens	Color	Options
FP2Q=2 FT FP Series EasyLED Food Processing Harsh Environment Linear Pendant Fixture	F=Medium Bream 70° Optics W=Wide Bream 110° Optics *See Page 5 for Distribution Information.	1X25=25W 1X35=35W 1X50=50W	U=120-277V	4K=4000K 5K=5000K	CP=Clear Polycarbonate* CA=Clear DR Acrylic *Not recommended for Alkaline Industrial Cleaners.	W=White	SF=Single Fuse* DF=Double Fuse* SP=10 KV Surge Protector* SP2=20 KV Surge Protector* S3=Internal Microwave Sensor with Dimming for Mounting Heights of 25' or less BU=Battery Backup, 90 Minutes* *120-277V Models Only.

Order Information Example:		FP4QW1X75U4KCAW					
FP4Q						W	
Model	Optics	Wattage	Driver	CCT	Lens	Color	Options
FP4Q=4 FT FP Series EasyLED Food Processing Harsh Environment Linear Pendant Fixture	F=Medium Bream 70° Optics W=Wide Bream 110° Optics *See Page 5 for Distribution Information.	1X50=50W 1X75=75W 1X100=100W	U=120-277V H=347-480V	4K=4000K 5K=5000K	CP=Clear Polycarbonate* CA=Clear DR Acrylic *Not recommended for Alkaline Industrial Cleaners.	W=White	SF=Single Fuse* DF=Double Fuse* SP=10 KV Surge Protector* SP2=20 KV Surge Protector* S3=Internal Microwave Sensor with Dimming for Mounting Heights of 25' or less BU=Battery Backup, 90 Minutes* *120-277V Models Only.

Order Information Example:		FP8QM1X150U5KCPW					
FP8Q						W	
Model	Optics	Wattage	Driver	CCT	Lens	Color	Options
FP8Q=8 FT FP Series EasyLED Food Processing Harsh Environment Linear Pendant Fixture	F=Medium Bream 70° Optics W=Wide Bream 110° Optics *See Page 5 for Distribution Information.	1X150=150W 1X200=200W	U=120-277V H=347-480V	4K=4000K 5K=5000K	CP=Clear Polycarbonate* CA=Clear DR Acrylic *Not recommended for Alkaline Industrial Cleaners.	W=White	SF=Single Fuse* DF=Double Fuse* SP=10 KV Surge Protector* SP2=20 KV Surge Protector* S3=Internal Microwave Sensor with Dimming for Mounting Heights of 25' or less BU=Battery Backup, 90 Minutes* *120-277V Models Only.

Accessories & Replacement Parts:

**Mounting Accessories
 (Order Separately, Field Installed)**

FPBSS FP Series Surface Mounting Bracket (Includes 2)



FPBSS
 One Bracket Mounts to Each End.

**Accessories
 (Order Separately, Field Installed)**

P17122 Remote Programming Tool for P17121



P17122

**Replacement Parts
 (Order Separately, Field Installed)**

P17121 Internal Microwave Sensor with Dimming & Remote Programming, 120-277V Only. See P17121 Spec. Page for Details.

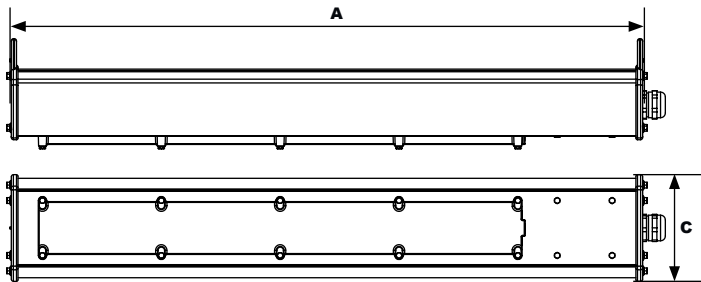
For Replacement Battery Backup, see the LED Battery Backup Specification Sheet.



P17121

Dimensions

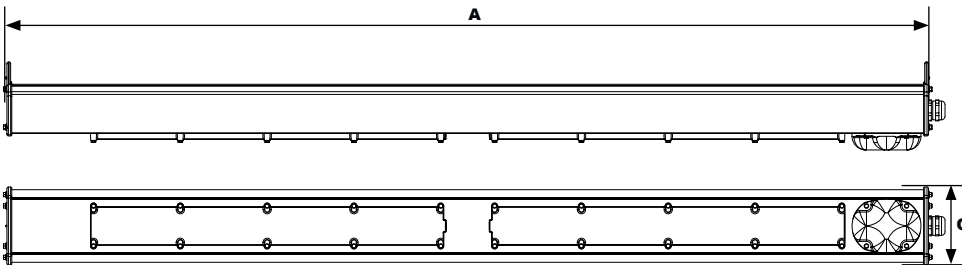
2FT FP Series (FP2Q)



Dimensions

Width (C) | 4.1" (103mm)
Length (A) | 24" (610mm)

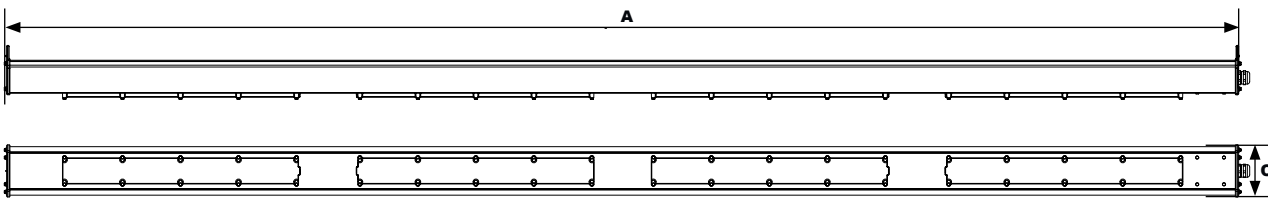
4FT FP Series (FP4Q)



Dimensions

Width (C) | 4.1" (103mm)
Length (A) | 48" (1,219mm)

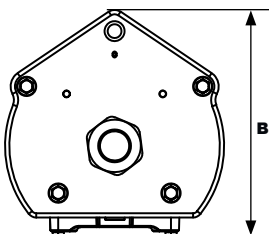
8FT FP Series (FP8Q)



Dimensions

Width (C) | 4.1" (103mm)
Length (A) | 96" (2,438mm)

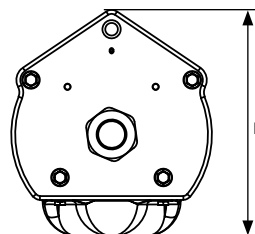
End Cap



Dimensions

Heights (B) | 4.1" (104mm)

End Cap with Microwave Sensor



Dimensions

Heights (B) | 4.6" (116mm)



SPEC GRADE

PROlite LED Lighting™

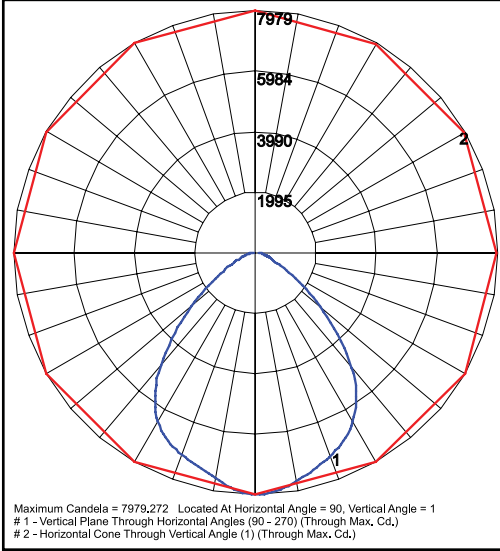
JOB NAME: _____

TYPE: _____

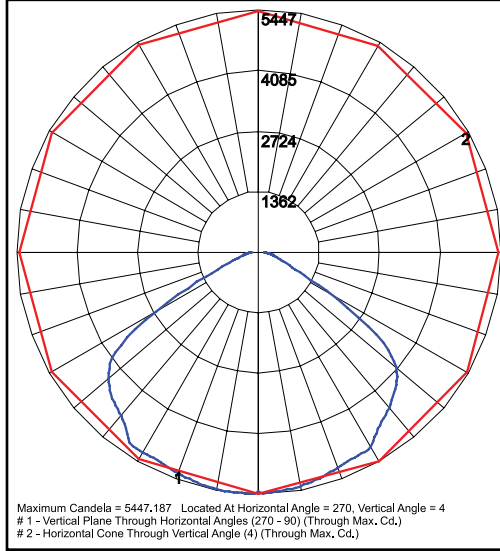
PART #: _____

NOTES: _____

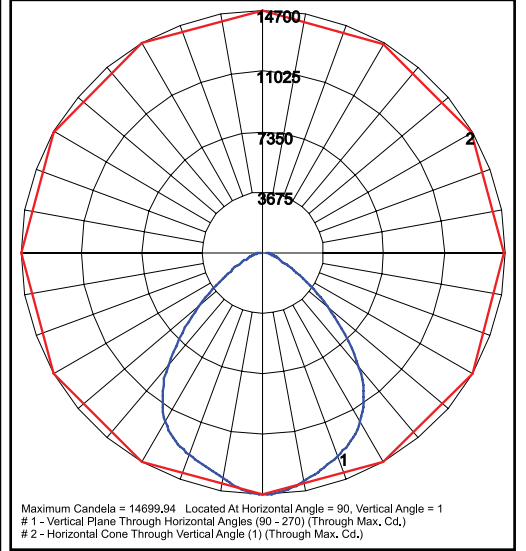
Photometric Data



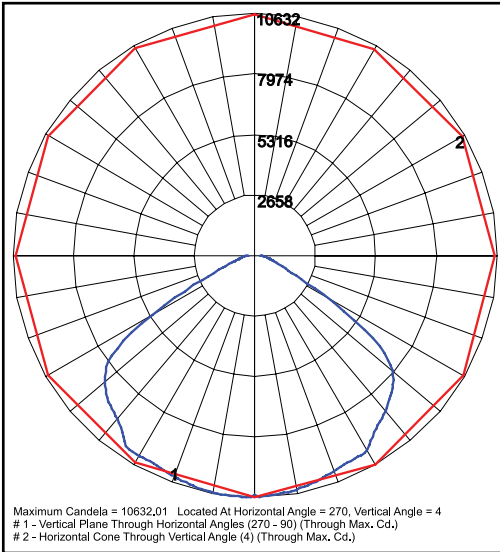
FP4QM1X100U4K
Grid in feet, Mounting Height = 25 ft.



FP4QW1X100U4K
Grid in feet, Mounting Height = 25 ft.



FP8QM1X200U4K
Grid in feet, Mounting Height = 25 ft.



FP8QW1X200U4K
Grid in feet, Mounting Height = 25 ft.



SPEC GRADE

PROlite LED Lighting™

JOB NAME: _____

TYPE: _____

PART #: _____

NOTES: _____

Photometric Performance

		FP2Q - 2FT			FP4Q - 4FT			FP8Q - 8FT	
	Wattage (Catalog Logic)	25W (1X25)	35W (1X35)	50W (1X50)	50W (1X50)	75W (1X75)	100W (1X100)	150W (1X150)	200W (1X200)
Input Watts		25W	33W	49.6W	49.6W	75.5W	99.1W	151.1W	198.3W
Optic	CCT	Delivered Lumens							
M = Medium - 70° Beam	4000K	4,109	5,424	8,152	8,152	12,409	16,288	22,924	30,007
	5000K	4,212	5,559	8,356	8,356	12,719	16,695	23,497	30,757
W = Wide - 110° Beam	4000K	4,028	5,317	7,992	7,992	12,165	15,968	22,630	30,640
	5000K	4,129	5,450	8,192	8,192	12,469	16,367	23,196	31,406

Projected Lumen Maintenance

Data shown for 5000 CCT		Compare to MH				
TM-21-11	Watts	Initial	25,000 Hrs	50,000 Hrs	100,000 Hrs	Calculated LED Life
L70 Lumen Maintenance @ 25°C / 77°F	50W - FP2Q 100W - FP4Q 200W - FP8Q	1.00	0.96	0.92	0.88	188,000
L70 Lumen Maintenance @ 50°C / 122°F		1.00	0.96	0.91	0.87	174,000
L80 Lumen Maintenance @ 40°C / 104°F		1.00	0.96	0.91	0.87	117,000

- NOTES:**
1. Projected per IESNA TM-21-11. Data references the extrapolated performance projections for the base model in a 25°C ambient, based on 10,000 hours of LED testing per IESNA LM-80-08.
 2. Compare to MH box indicates suggested Light Loss Factor (LLF) to be used when comparing to Metal Halide (MH) systems.