

Hazardous Location P161221-Series



Product description

The P161221-Series LED Luminaire can be used in locations made hazardous by the presence of flammable vapors, gases or combustible dusts or fibers as defined by NEC, ATEX, IECEx. The P161221 series housing is die-cast aluminum and bolts / brackets are stainless steel. **Pendant mount is standard along with U-bracket wall mount.** The lens is polycarbonate spherical lens. Emergency battery backup is available.



Features

- Replaceable Drive & LED's
- U Bracket Standard (for wall mounting)
- Pendant Mount standard
- Dimmable and non-dimmable options available.
- Emergency battery backup available (adds to height)
- Standard 120-277V, Available options 277-480V, 12-37VDC
- 2000-11,200 Lumens
- Buy American option (BAA, TAA)
- **Housing:** A383 Die Cast Aluminum
- **Gasketing:** Fluorosilicone Rubber
- **Hardware:** Stainless Steel
- **Finish:** Polyester Powdercoat
- **Lens:** Polycarbonate option flat glass
- **Expected Life:** Over 85,000 hrs.
- **Rating:** IP66 & IK10
- **Color Rendering Index (CRI):** 70
- **Operating Temp:** -40°C – +60°C
- **Relative Humidity:** 10-90% RH
- **Power Factor:** >.95
- **Input Line Voltage:** 90-305 / 200-525 VAC
- **Input Line Frequency:** 50/60 Hz
- **LED Chips:** Philips
- **Driver:** Meanwell
- **Surge Protection:** 10KV
- **DC Output Ripple & Noise:** <200mVP-P
- **T-Rating:** T3

Compliance

UL 844 Hazardous Locations North America

- Class I, Division 2, Groups A, B, C, D
- Class II, Division 1, Groups E, F, G
- Class II, Division 2, Groups F, G
- Class III

Marking ATEX

- II3 G Exec IIC T5/T6 Gc
- II2 D Ex tb IIIC T80/100° C Db IP66

Marking IECEx

- Exec IIC T5/T6 Gc
- Ex tb IIIC T80/100°C Db IP66

Marking Marine

- UL1598, UL1598A
- ABS

Other Markings / Standards

- IP66

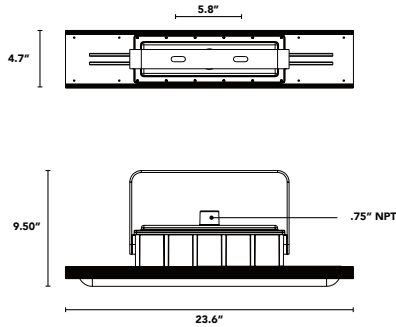
Applications

- Power Plants / Heavy Industrials Storage Facility
- Paper Mills / Wastewater Treatment Plants
- Loading Docks / Platforms / Shipyards
- Chemical Processing Facility
- Petrochemical Processing Facility
- Mining
- Ocean Marine
- LNG facilities
- Metal Industry
- Food & Alcohol, distilling

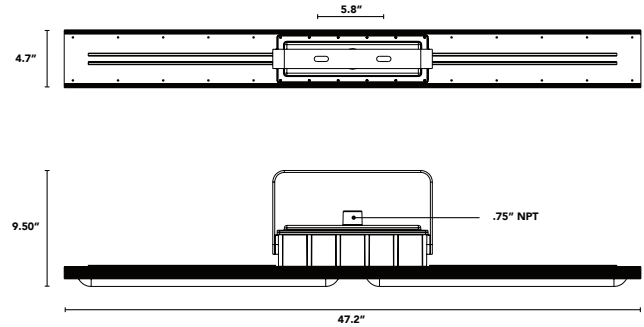
Product Dimensions

Hazardous Location LED Luminaire

20W



40W - 50W - 60W



Photometric

Hazardous Location LED Luminaire

120D

Center Beam fc		Beam Width	
10ft	25fc	30ft	34ft
20ft	6fc	59ft	67ft
30ft	3fc	89ft	100ft
40ft	1fc	148ft	134ft
50ft	0.6fc	178ft	168ft

■ Vert, Spread; 120°
■ Horiz, Spread; 120°

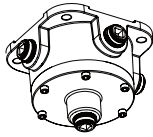
Lumen Chart

	3500K	4000K	5000K
20W	2,000 lm	2,560 lm	2,800 lm
40W	4,800 lm	5,120 lm	5,600 lm
60W	7,200 lm	7,680 lm	8,400 lm
80W			11,200 lm

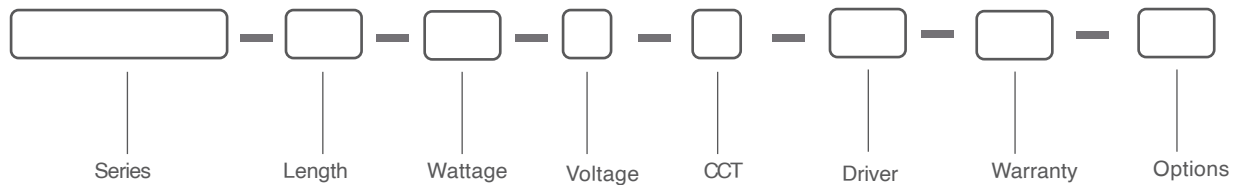
Mounting Accessories

Hazardous Location LED Luminaire

OPEB: Junction Box



Ordering Guide



<u>SERIES</u>	<u>LENGTH</u>	<u>WATTAGE</u>	<u>VOLTAGE</u>	<u>COLOR TEMP</u>	<u>DRIVER</u>	<u>WARRANTY</u>
P161221	2' = 2' 4 = 4'	2 = 20W 4 = 40W 6 = 60W 8 = 80W	LV = 100-277V HV = 277-480V	S ² = 3000K I = 4000K C = 5000K K = 6000K	D = Dimmable ND = Non-Dimmable	5Y = Five Year 10Y* = Ten Year Warranty* <small>*Please contact factory for 10yr option.</small>

Notes

- 2' Version available in 20W / 40W (40W AVAILABLE IN 2' AND 4' VERSIONS).
- Contact factory for custom color temperatures (<3000K / >6000K).
- Contact factory for battery backup dimensions

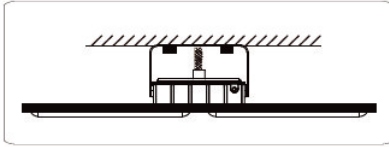
OPTION

- S = Motion Sensor
 EM³ = 90 Minute Emergency Operation
 OPEB = Junction Box
 BAA = Buy American Act Compliant**
 TAA = Trade Agreements Act Compliant**

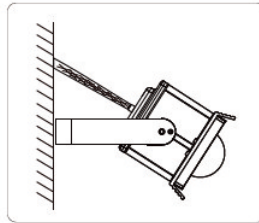


Mounting Methods:

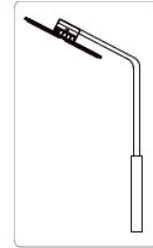
⦿ Ceiling Mounting:



⦿ Wall Mounting:



⦿ Pole Bracket Mounting:



Dimensions Battery Back up

