

PMAR Series

Hazardous Location LED Luminaire

Product Description:

The PMAR Series LED Luminaire can be used to replace HPS/MH jelly jar fixtures. The PMAR series is typically used in small spaces in which mounting heights range from 6-12ft. Commonly installed where moisture, dirt, dust, corrosion and vibration may be present, or NEMA 4X areas where wind, water, snow or high ambient temperatures can be expected. The fixture can be used in locations made hazardous by the presence of flammable vapors or gases or combustible dusts as defined by the NEC. The Mars is standard with pendant mount and strut mounting clips.

Applications:

- Power Plants / Heavy Industrials Storage Facility
- Paper Mills / Wastewater Treatment Plants
- Loading Docks / Platforms / Shipyards
- Chemical Processing Facility
- Petrochemical Processing Facility
- Mining
- Ocean Marine
- LNG facilities
- Metal Industry
- Food & Alcohol Industry
- Remote sensors

Features:

- Heavy-duty and high impact resistance
- Replaceable Driver, LED board
- Dimmable and non-dimmable options available.
- Tempered glass lens standard with opal globe and guard option available for wider distribution and protection.
 - Angle Reflector
 - Dome Reflector
- Various mounting options include: pendant mount, wall mount, stanchion, or surface mount.
- Standard 120-277V, Available options include: 12-36VDC
- Operating Temperature: -40°C - 60°C (-40°F - 140°F)
- Housing: A383 Die Cast Aluminum
- Gasketing: Fluorosilicone Rubber
- Hardware: Stainless Steel
- Finish: Polyester Powdercoat
- Lens: Tempered Glass
- LED Chips: Philips
- Driver: Meanwell
- Surge Protection: 10KV
- Expected Life: Over 85,000 hrs.
- Rating: IP66 & IK10
- Color Rendering Index (CRI): 80



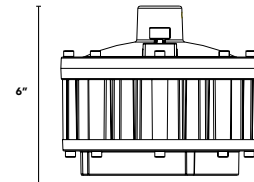
5 Year and 10 Year Warranties Available

BAA and TAA available. Contact factory for more information and pricing.



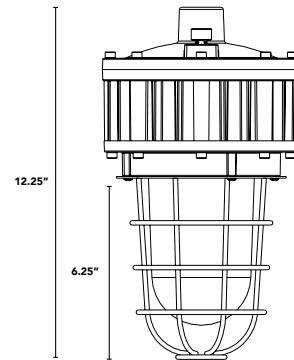
Product Dimensions

Flat Lens w/ Pendant Mount

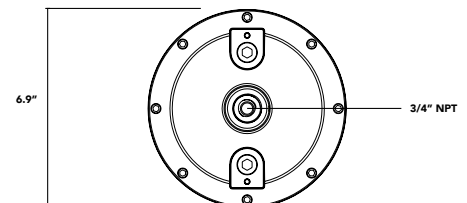


* Contact your local representative for angle or dome reflector dimensions

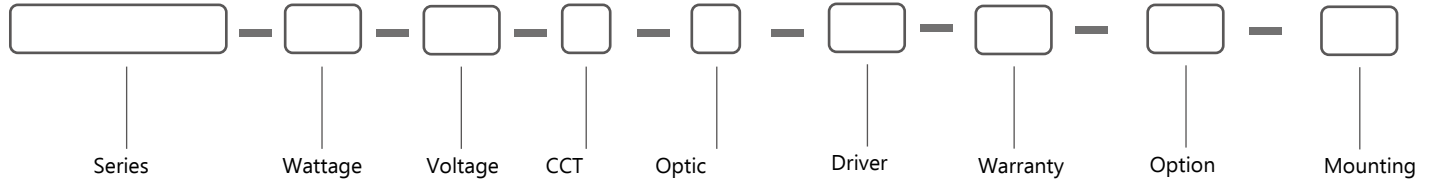
Drop Lens with Wire Guard w/ Pendant Mount



Ceiling Mounting Plate



Ordering Information



<u>SERIES</u>	<u>WATTAGE</u>	<u>VOLTAGE</u>	<u>COLOR TEMP</u>	<u>OPTIC</u>	<u>DRIVER</u>	<u>WARRANTY</u>
PMAR	1 = 10W 2 = 20W 3 = 30W 4 = 40W	A = AC100-277V C = 12-48VDC	S = 3000K I = 4000K C = 5000K K = 6000K	M = 40° N = 60° O = 90° P = 120°	D = 0-10V Dimming ND = No Dimming	5Y = Five Year Std 10Y* = Ten Year Warranty* *Please contact factory for 10yr option.

OPTION

EM = Emergency Battery Backup
 CG = Clear Globe
 FG = Frosted Globe
 WG = Wire Guard
 CGG = Clear Globe w/ Wire Guard
 FGG = Frosted Globe w/ Wire Guard
 DREF = Dome Reflector
 AREF = Angle Reflector
 S = Sensor (coming 2022)
 BAA** = Buy American Act Compliant**
 TAA** = Trade Agreements Act Compliant**

**Please contact factory for BAA and TAA options.

MOUNTING / ACCESSORIES

OPEB = Junction Box
 OPCM = Ceiling / Surface Mounting & Junction Box: 3/4" NPT
 OPWA = 90° Wall Mount
 OPWA25 = 25° Wall Mount & Junction Box: 3/4" NPT
 OPWA90 = 90° Wall Mount & Junction Box: 3/4" NPT
 OPPS25 = 25° Pole Mount: 1-1/2" NPT
 OPPS90 = 90° Pole Mount: 1-1/2" NPT

***STANDARD STOCK ITEMS ARE:**

- **5000K CCT**
- **100-277V**
- **Non-Dimmable**
- **W/Globe and Wire Guard**

Compliance

UL 844 Hazardous Locations North America

- Class I, Division 1, Groups C, D
- Class I, Division 2, Groups A, B, C, D
- Class II, Division 1, Groups E, F, G
- Class II, Division 2, Groups E, F, G
- Class III

Marking Marine

- UL1598,
UL1598A
- ABS

Other Markings / Standards

- IP66
- IK10

Lumen Chart

	5000K
10W	1,400lm
20W	2,800lm
30W	4,200lm
40W	5,600lm
50W	7,000lm

Photometric

40D

Center Beam fc	Beam Width
4ft	2008fc 4ft 4ft
8ft	480fc 7ft 7ft
12ft	203fc 11ft 11ft
16ft	115fc 15ft 16ft
20ft	98fc 19ft 23ft

■ Vert, Spread; 40°
 ■ Horiz, Spread; 40°

60D

Center Beam fc	Beam Width
4ft	1434fc 6ft 5ft
8ft	343fc 11ft 11ft
12ft	145fc 17ft 14ft
16ft	81fc 22ft 23ft
20ft	69fc 27ft 31ft

■ Vert, Spread; 60°
 ■ Horiz, Spread; 60°

90D

Center Beam fc	Beam Width
4ft	1024fc 8ft 8ft
8ft	255fc 15ft 16ft
12ft	105fc 24ft 26ft
16ft	58fc 32ft 33ft
20ft	39fc 39ft 45ft

■ Vert, Spread; 90°
 ■ Horiz, Spread; 90°

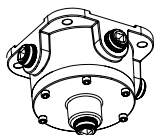
120D

Center Beam fc	Beam Width
4ft	683fc 11ft 11ft
8ft	170fc 21ft 22ft
12ft	73fc 32ft 33ft
16ft	39fc 43ft 45ft
20ft	26fc 53ft 56ft

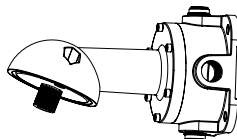
■ Vert, Spread; 120°
 ■ Horiz, Spread; 120°

Mounting Accessories

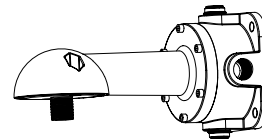
OPEB: Junction Box



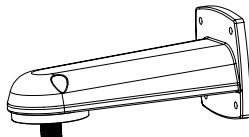
OPWA25: 25° Wall Mount & Junction Box



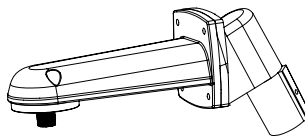
OPWA90: 90° Wall Mount & Junction Box



OPWA: 90° Wall Mount



OPPS25: 25° Pole Mount



OPPS90: 90° Pole Mount

