

PHBLASR-HL

Adjustable Linear High Bay Sensor Ready Lumens & Kelvin Selectable

HOUSING: Premium powder-coat, steel, white housing.

ELECTRICAL:

- Operating temperature (ambient): -40°C to 50°C (-40°F to 122°F) .
- Universal 120-277V AC voltage (50-60Hz) is standard.
- Optics rotate up to 135°.
- Screw in sensor ready. (Sensor and remote control sold separately).
- 0-10VDC dimming drivers are standard.
- Input transient surge protection = 6kV.
- Power factor > 90.
- Total harmonic distortion < 20%.

OPTICAL SYSTEM:

- Polycarbonate lens.
- Field Selectable 3000k (warm white), 4000k (neutral white) and 5000k (cool white) color temperatures*.
- Five Lumens selectable provide a range of 24,797 to 43,947 nominal lumens (see lumen tables on page 3)*.
- Screw in sensor ready. (see default settings on page 2).
- Long-life LEDs provide 167,000 hours of operation with at least 70% of initial lumen output (L70), and 51,000 hours with at least 90% of initial lumen output (L90)**.
- LED color maintenance < -0.00253 chromaticity shift ($\Delta u'v'$) over the initial 6,000 hours of operation.
- Color rendering index > 80.

* Default kelvin temperature 4000k and highest lumen output.

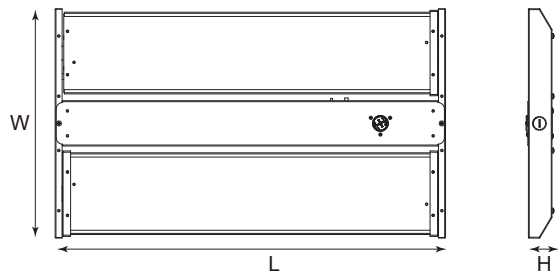
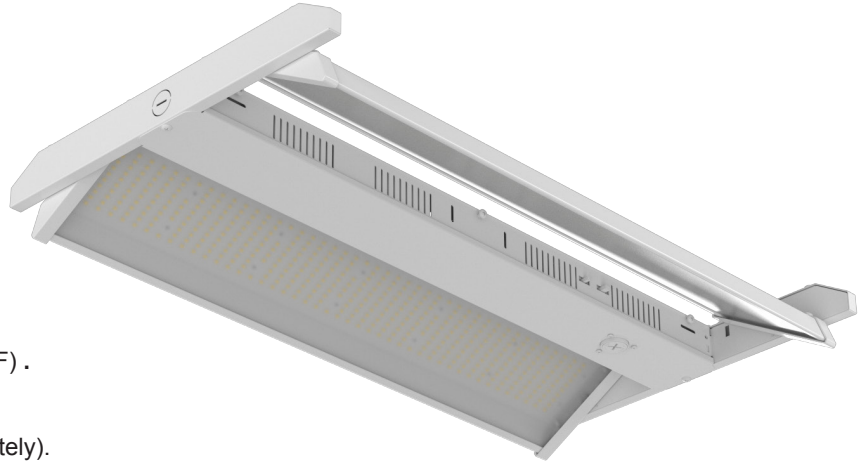
**L70 & L90 hours are IES TM-21-11 calculated hours.

MOUNTING: Chain-mount kit (includes v-hooks , 1-meter long chain) are standard.

WARRANTY: 5 year warranty on all electronics and housing.

CODE COMPLIANCE:

- cULus listed for damp locations.
- DLC standard listed.
- Complies with FCC part 15, class A.



Model #	L (in)	W (in)	H (in)	Weight (lbs)
PHBLASR-HL-4541383325L-3CCT	24.8	14.57	1.50	7.94

ORDERING INFORMATION Example:
 PHBLASR-HL-4541383325L-3CCT

Series	Nominal Lumen Output (Selectable)		Kelvin Selectable
PHBLASR-HL	4541383325L	45,000 / 41,000 / 38,000 / 33,000 / 25,000 lm	3CCT 3000 / 4000 / 5000K

ACCESSORIES (ORDER SEPARATELY)

Sensor

- HD09VR-PH5-1* = Passive infrared sensor - maximum mounting height = 39FT.
 HD09VR-MH5-1* = Microwave step-dimming sensor - maximum mounting height = 49FT.
 HD05R = Remote control for HD09VR series sensors.
 *HD09VR series has 5-dial setting capability.

Factory settings for Sensors :

tection area =100%, hold time = 5 sec, stand-by period = 0 sec, stand-by dimming level = 10%, daylight threshold = disabled

Mounting

Hardware:

- PHBLASR-SMK = SURFACE MOUNT KIT FOR ALL HBLASR MODELS*
 PHBLASR-PMK = PENDANT MOUNT KIT FOR ALL HBLASR MODELS*

*SMK and PMK not ompatible with UNC and EM drivers.

Remote Mount EM Drivers:

- BLEM-CP-10C = 10W EMERGENCY DRIVER WITH CONDUIT - EM10
 BLEM-CP-13C = 13W EMERGENCY DRIVER WITH CONDUIT - EM13

COMPATIBLE DIMMERS

Manufacturer	Model Number	Dimmer Range	Load Switching Capacity
Best Lighting	DWS-010V-T	10%-100%	600W
Best Lighting	DWS-010V-D	10%-100%	600W
Leviton	IP710-LFZ	10%-100%	1200W
Lutron	DVSTV	10%-100%	450W

LUMEN TABLES)

Series	Measurements	165W			220W			255W		
		3000K	4000K	5000K	3000K	4000K	5000K	3000K	4000K	5000K
PHBLASR-HL-45413 8 3325L-3CCT	Lumens	24797	26027	26589	31963	33757	34117	35954	38205	38405
	Watt	163.55	159.87	163.37	217.5	211.04	216.33	249.6	242.3	249.2
	Efficacy	151.62	162.80	162.75	146.96	159.96	157.71	144.05	157.68	154.11
Series	Measurements	275W			300W					
		3000K	4000K	5000K	3000K	4000K	5000K			
PHBLASR-HL-4541383325 L-3CCT	Lumens	38294	40792	40951	41020	43947	43927			
	Watt	269.1	260.6	269.1	293.7	283.8	293.5			
	Efficacy	142.30	156.53	152.18	139.67	154.91	149.67			

ELECTRICAL DATA

Series	CCT	Input Amps (A)								
		165W			220W			255W		
		120V	240V	277V	120V	240V	277V	120V	240V	277V
PHBLASR-45413 8 3325L-3CCT	3000k	1.36	0.68	0.59	1.81	0.91	0.79	2.08	1.04	0.90
	4000k	1.33	0.67	0.58	1.76	0.88	0.76	2.02	1.01	0.87
	5000k	1.36	0.68	0.59	1.80	0.90	0.78	2.08	1.04	0.90

Series	CCT	Input Amps (A)					
		275W			300W		
		120V	240V	277V	120V	240V	277V
PHBLASR-45413 8 3325L-3CCT	3000k	2.24	1.12	0.97	2.45	1.22	1.06
	4000k	2.17	1.09	0.94	2.37	1.18	1.02
	5000k	2.24	1.12	0.97	2.45	1.22	1.06

PHOTOMETRICS

PHBLASR-4541383325L-3CCT

Luminaire Data

Description	Adjustable High Bay Lumen/Kelvin Selectable
Total Lumens	43,947
Input Wattage	284
Efficacy (lm/W)	155
Spacing Criterion (0-180°)	1.24
Spacing Criterion (90-270°)	1.22

Photometrics calculated at
4000k - high lumens setting

Zonal Lumen Summary

Zone	Lumens	%Fixt
0-20°	5,949	13.5%
0-30°	12,520	28.5%
0-40°	20,278	46.1%
20-50°	22,157	50.4%
40-70°	19,836	45.1%
0-60°	34,976	79.6%
0-80°	43,080	98.0%
0-90°	43,891	99.9%
90-180°	56	0.1%
0-180°	43,947	100.0%

